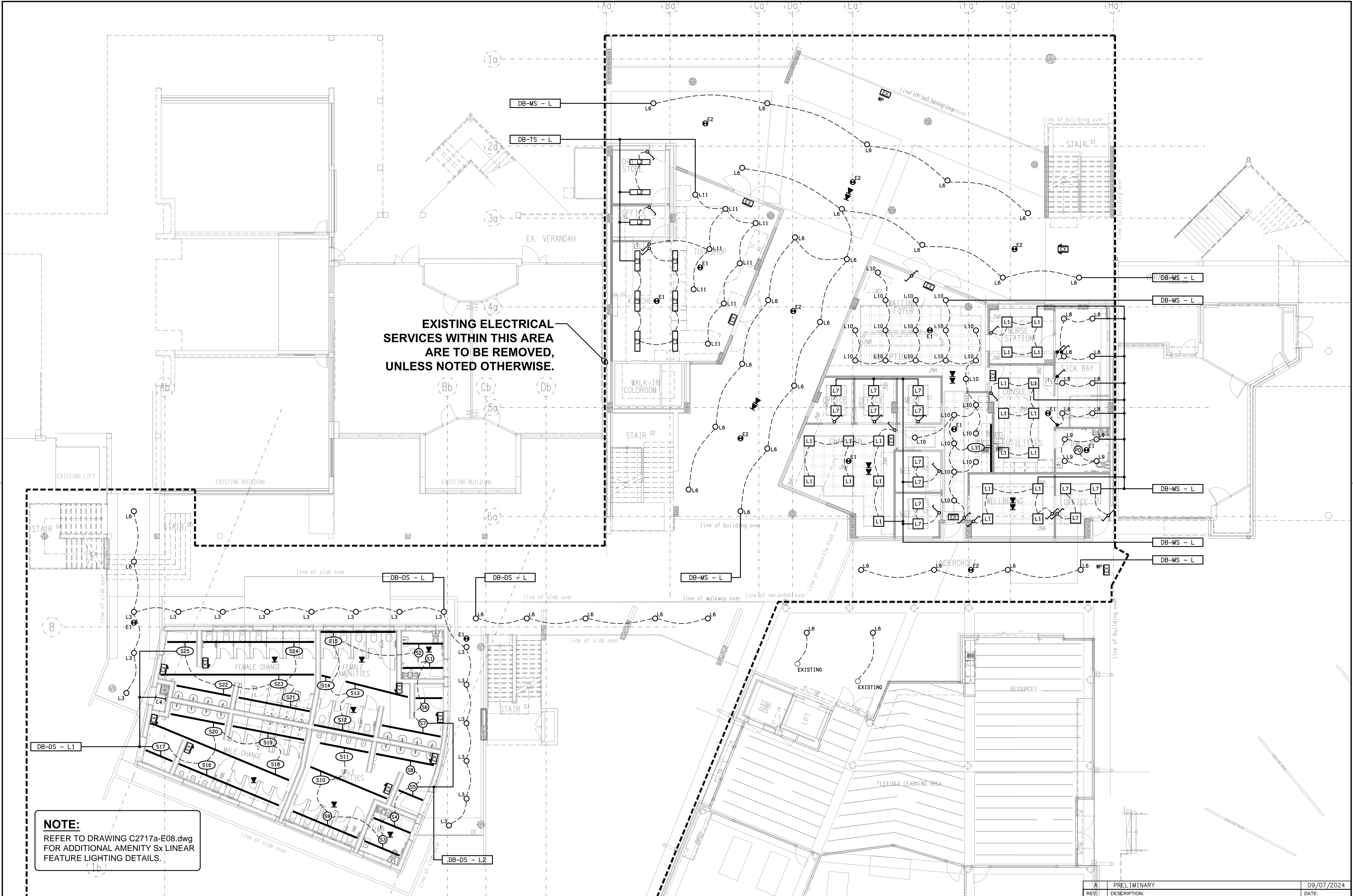


EXISTING ELECTRICAL SERVICES WITHIN THIS AREA ARE TO BE REMOVED, UNLESS NOTED OTHERWISE.

NOTE:
REFER TO DRAWING C2717a-E08.dwg FOR ADDITIONAL AMENITY Sx LINEAR FEATURE LIGHTING DETAILS.



ELECTRICAL DESIGN GROUP BRISBANE
PTY LTD
ACN 092 710 793
TRADING AS:
ELECTRICAL DESIGN GROUP

THE COPYRIGHT OF THIS DRAWING
REMAINS THE PROPERTY OF THE
ELECTRICAL DESIGN GROUP.
USE FIGURED DIMENSIONS
IN PREFERENCE TO SCALE.
ALL DIMENSIONS TO BE
VERIFIED ONSITE.

ELECTRICAL DESIGN GROUP
ELECTRICAL BUILDING SERVICES CONSULTANTS
BRISBANE GOLD COAST
P.O. Box 15, Sherwood Q.4075
Phone: (07) 3278 4375
Email: brisbane@edg.net.au
Web: www.edg.net.au

PROJECT:
**KINGS CHRISTIAN COLLEGE - REEDY CREEK
GLAs & STUDENT SERVICES KCC49**
68 GEMVALE ROAD, REEDY CREEK, QUEENSLAND

REV: A	DESCRIPTION: PRELIMINARY	DATE: 09/07/2024
DRAWING: ELECTRICAL SERVICES GROUND LEVEL REFLECTED CEILING PLAN		
SCALE: 1:100	PROJECT NO: C2717a	DRAWING NO: E07
AT A1	REVISION: A	